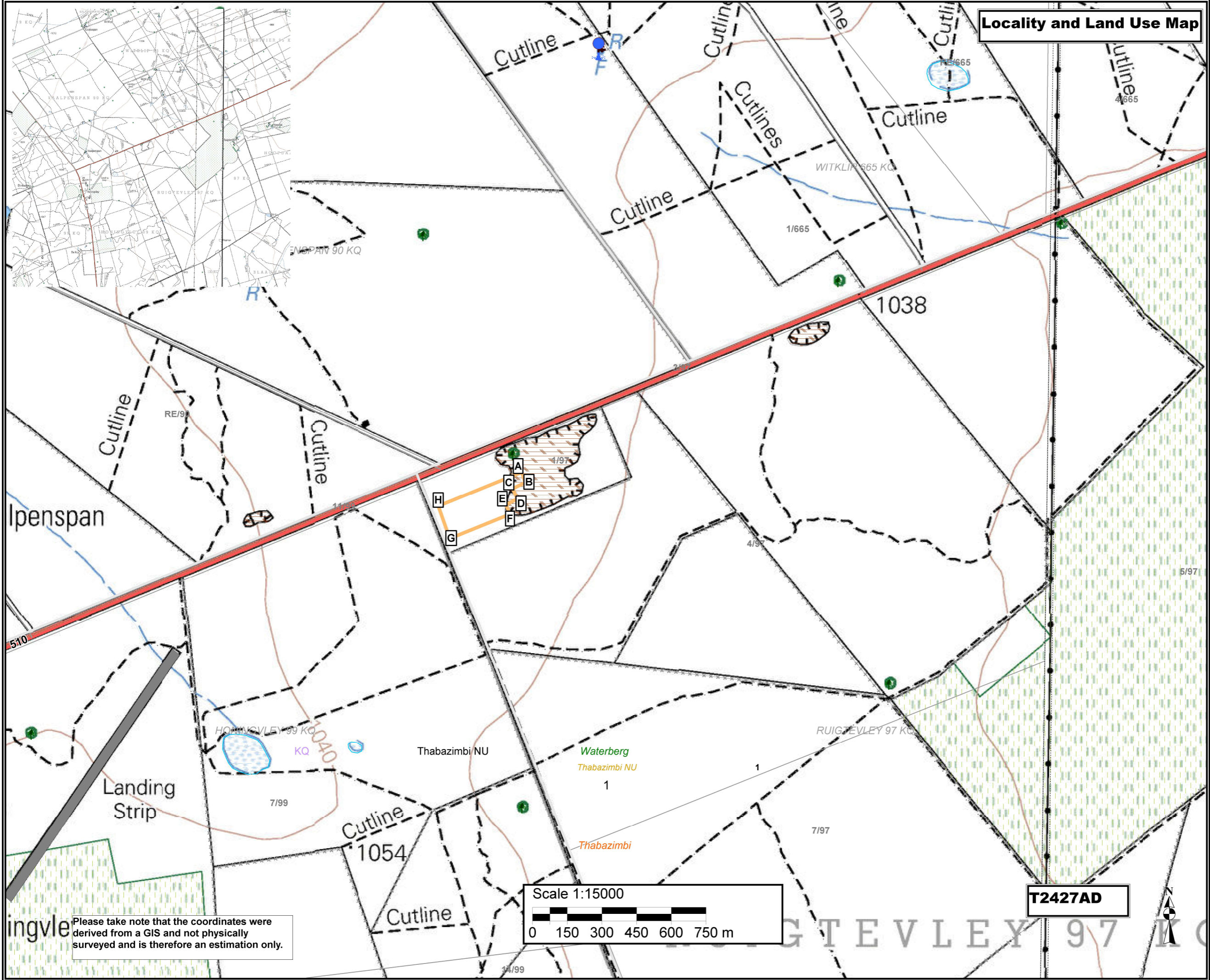


Locality and Land Use Map



- Legend**
- Air transport
 - LANDING STRIP
 - Artificial surfaces
 - EXCAVATION
 - Barriers
 - FENCE
 - Buildings
 - HOUSE
 - Inland water
 - NON-PERENNIAL PAN
 - River
 - NON-PERENNIAL CENTER LINE
 - Roads
 - R510
 - Vegetation
 - CULTIVATED LAND
 - TREE
 - Water source
 - RESERVOIR
 - Administrative region: KQ
 - Farm portions
 - Parent farms
 - District Municipalities 2012
 - Limpopo Province
 - Waterberg District Municipality
 - Thabazimbi Local Municipality
 - Ward: No 1
 - Mining Permit Area

Proposed mining area coordinates:
 A-24,305343°S; 27,415594°E
 B-24,305754°S; 27,415737°E
 C-24,305989°S; 27,415203°E
 D-24,306401°S; 27,415396°E
 E-24,306624°S; 27,414917°E
 F-24,306989°S; 27,415089°E
 G -24,307945°S; 27,412525°E
 H-24,306675°S; 27,41204°E
 A-24,305343°S; 27,415594°E

A 24°18'19,235"S; 27°24'56,138"E
 B 24°18'20,714"S; 27°24'56,653"E
 C 24°18'21,56"S; 27°24'54,731"E
 D 24°18'23,044"S; 27°24'55,426"E
 E 24°18'23,846"S; 27°24'53,701"E
 F 24°18'25,16"S; 27°24'54,32"E
 G 24°18'28,602"S; 27°24'45,09"E
 H 24°18'24,03"S; 27°24'43,344"E
 A 24°18'19,235"S; 27°24'56,138"E

Mining permit application area:
 4.9 ha

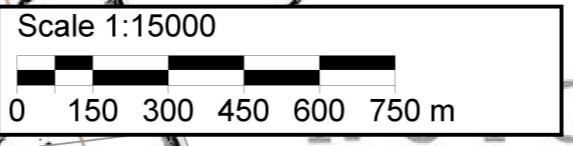
Client:



Consultant:



Please take note that the coordinates were derived from a GIS and not physically surveyed and is therefore an estimation only.



T2427AD